

# LMX™ Smart Pump

For Industrial and Institutional Applications

The LMX™ smart pump enables institutional and industrial applications to reliably return condensate to their boiler. The fully automated smart pump provides visibility into the condensate return system and on-screen diagnostics allow planned maintenance and quick issue resolution.

Engineered for demanding environments, LMX smart pumps maintain a minimal footprint and standard configurations are manufactured with a protective steel cabinet. The low profile, skid mounted design makes system integration easy. Using Kadant Johnson’s intuitive user interface and large touch screen display, users have access to on-screen status updates and performance diagnostics while the 360° stack light provides easy to read visual alerts. The intelligent LMX smart pump is scalable to address the condensate flow requirements of your application.



## Features



- Condensate flow diagnostics
- Live performance status
- Large intuitive user interface
- Preventive maintenance alerts
- Radar level control with no moving parts
- Flange connections
- Skid or frame mounted construction
- Local (in-plant network) or remote (optional) diagnostics and prognostics
- 360° stack light visibility
- Protective cabinet (on some models)
- Redundant pumping system (optional)

## Benefits



- Detects issues before system impacted
- Real-time visibility into system performance
- Simple operation
- Maximized uptime
- Continuous level sensing, no probe fouling
- Easy to service
- Trouble-free integration
- Fast troubleshooting
- Minimal duration of down events
- Status visibility at a glance
- Protection from outside contaminants
- Continued operation if one pump fails

### Detects Issues Before Performance Impacted

The LMX smart pump utilizes live performance status tracking, radar level control, and local or remote prognostics to give insight into condensate levels, valve position, alarms, and more.

Visible alerts can be closely viewed on the touch screen monitor or at a distance with the 360° color coded stack light.

### Reduces Unplanned Down Time

Continuous monitoring, whether it is locally by the customer or remotely by Kadant Johnson (optional), will allow maintenance teams to stay on top of unexpected issues.

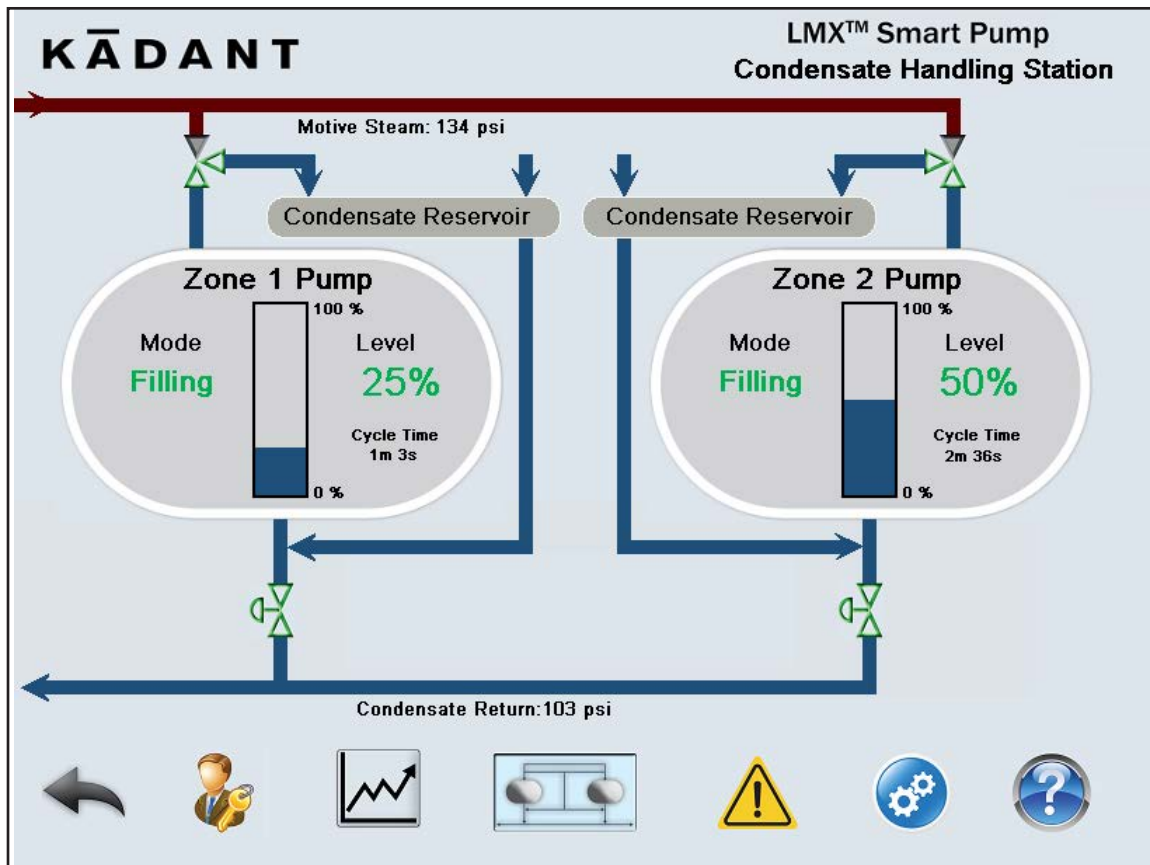
High-quality valves paired with flanged connections have been life cycle tested in our research and development center, ensuring reliability well after installation. Optional redundancy is offered across multiple LMX smart pump models.

### Rigid Steel Frame for Industrial Conditions

The steel frame protects the internal workings of the LMX smart pump. The optional low-profile design coupled with a pre-packaged, skid (or appropriately sized frame) mounted design makes installation straight forward. Available access ports to connections and controls make setup fast and easy.

### Turnkey System Integration

Our experts can manage the design and installation of the LMX smart pump so customers can have peace of mind knowing that their LMX smart pump is installed correctly the first time. Typical installations will include the base LMX smart pump, systems engineering, and installation including electrical and piping.



Main Operator Interface Screen