

# Sight Flow Indicators

## Fluid Handling Accessories

Kadant Johnson sight flow indicators are engineered to provide visual observation of liquid and gas flows. Designed for use with rotary joints and other applications requiring observation of flow through pipelines, Kadant Johnson sight flow indicators are available from  $\frac{3}{8}$ " to 4" with threaded and flanged options.



### Overview



#### Features

- Ductile iron construction
- Heavy duty borosilicate glass
- Special transparent-type Mica liners available



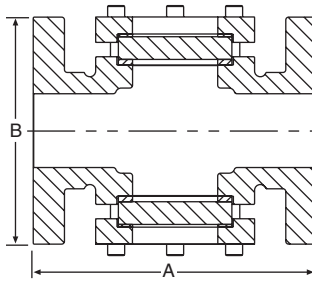
#### Benefits

- Minimal pressure drop
- Minimal flow resistance
- High visibility of flow

### Type PSFF



Available in sizes:  $1\frac{1}{4}$ " to 4"  
 Body connections: Flanged, Class 150  
 Pressure rating: 75 psi (5 bar)  
 Temperature rating: 350° F (177° C)

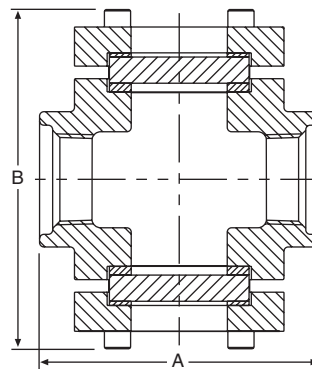


Size	A	B	Units
1¼"	6.25	5.0	inches
	159	127	mm
1½"	6.25	5.0	inches
	159	127	mm
2"	5.5	6.5	inches
	140	165	mm
3"	8.0	7.5	inches
	203	191	mm
4"	8.0	9.0	inches
	203	229	mm

### Type PSFS



Available in sizes:  $\frac{3}{8}$ " to 2½"  
 Body connections: Threaded  
 Pressure rating: 75 psi (5 bar)  
 Temperature rating: 350° F (177° C)



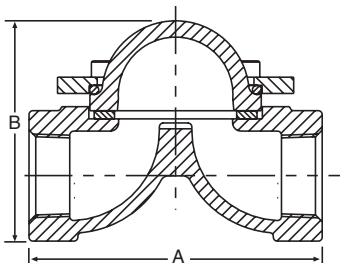
Size	A	B	Units
¾"	3.5	4.0	inches
	79	95	mm
1½"	3.5	4.0	inches
	79	95	mm
¾"	4.0	4.86	inches
	92	127	mm
1"	4.0	4.86	inches
	92	127	mm
1¼"	5.0	5.5	inches
	108	138	mm
1½"	5.0	5.5	inches
	108	138	mm
2"	5.0	6.0	inches
	114	146	mm
2½"	5.0	6.88	inches
	127	162	mm

Note: Operating above 75 psi (10 bar) will cause accelerated thinning of sight flow glass. Frequent inspections will be needed. Max pressure: 150 psi (10 bar)

## Type DSF/DBSF



Available in sizes:  $\frac{3}{8}$ " to  $1\frac{1}{4}$ "  
 Body connections: Threaded  
 Pressure rating: 140 psi (10 bar)  
 Temperature rating: 300° F (149° C)

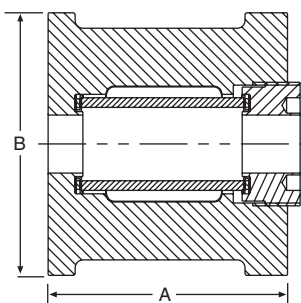


Size	A	B	Units
$\frac{3}{8}$ "	3.5	2.88	inches
	79	65	mm
$\frac{1}{2}$ "	3.5	2.88	inches
	79	65	mm
$\frac{3}{4}$ "	4.5	3.38	inches
	102	76	mm
1"	4.5	3.38	inches
	102	76	mm
$1\frac{1}{4}$ "	4.5	3.88	inches
	102	87	mm

## Type TSF



Available in sizes: 1" to 3"  
 Body connections: Flanged, Class 150  
 Pressure rating: 150 psi (10 bar)  
 Temperature rating: 365° F (185° C)



Size	A	B	Units
1"	4.08	4.25	inches
	99	108	mm
$1\frac{1}{4}$ "	4.02	4.63	inches
	99	117	mm
$1\frac{1}{2}$ "	5.02	5.0	inches
	124	127	mm
2"	5.02	6.0	inches
	124	152	mm
3"	6.01	7.5	inches
	149	191	mm

*Dimensions are for reference only and subject to change.*